



## EXHIBITIONS

### A Celebration of Fibre & Textiles

#### Gore Patchworkers and Stitchers Group

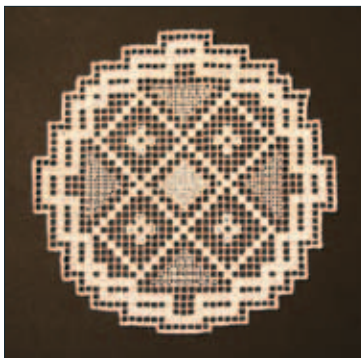
21 June – 13 July 2014

This exhibition highlights recent work from the Gore Patchworkers and Stitchers Group. Featuring a wide range of styles and techniques, the exhibition is a must-see for anyone with an interest in quilting.

#### Eastern Southland Embroiderers' Guild

21 June – 13 July 2014

This bi-annual presentation of embroidery features both traditional and contemporary genres - developed over the past two years by members of the Eastern Southland Embroiderers' Guild. The exhibition showcases a wide variety of techniques and media from cross stitch and hardanger, through to stump work and crewel (wool).



Lynette Mercer, *Filet Embroidery*



Jean Young, *Prayer Flag*

### Home Is Where The Art Is



#### Four Collectors and Works from their Collections

19 July – 31 August 2014

This exhibition encompasses a selection of unique domestic settings and commemorates four equally unique individuals - *Des Smith, Ray Yallop, Patric Carey and John Money*. We also celebrate their passion for collecting. Art patrons Des Smith and Ray Yallop were well known in Dunedin circles as enthusiastic champions for the arts in Otago. Their modest house was stacked floor to ceiling with not only historic paintings and works from the mid 1900's, but also significant pieces from the cream of young Dunedin-based talent. Celebrated theatre personality Patric Carey's elderly residence was also home to some remarkable New Zealand art. He and his wife Rosalie established Dunedin's Globe Theatre in the late 1950's, which along with

its plays, dance, mime, poetry and concerts, also featured art exhibitions. It was to become an intellectual hub for the city of Dunedin. In 1983 Patric moved to Gore. There his enthusiasm for his new home town and its gallery ensured many of the artists he had worked with would gravitate to Gore and his substantial personal collection of artworks provided the basis for many exhibitions. John Money was another such collector. A patron, enthusiast and friend of many artists and writers, John's modest home in Baltimore USA became a treasure trove of international art.

Interior of Des Smith & Ray Yallop's House (Photo by Raoul Butler)

*Exhibitions continued...*

# EXHIBITIONS

continued...

## Paper + Ink + Paint + Clay

70 Works from the John Perry Collection

19 July – 31 August 2014

John Perry is a legendary public gallery director, archivist, historian and authority on New Zealand's applied arts and material culture. From his time as Director of the Bath House Museum in Rotorua to his ownership of the cornucopia that is Global Village Antiques in Helensville John's influence, eye and ability to track down the most fascinating of objects has inspired, influenced and occasionally bewildered literally thousands of collectors,

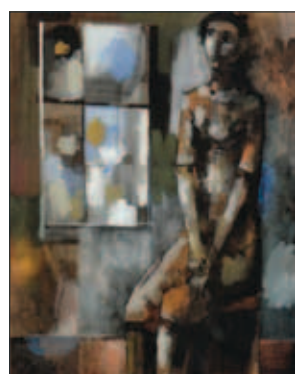
visitors and the plain curious. Curated by John from his own personal collection, **Paper + Ink + Paint + Clay** draws together an eclectic and fascinating group of prints, pottery, gourds and 3-D pieces that highlight the unique and highly personal nature of collecting. The exhibition includes work by Patrick Hanly, Bill Hammond, John Drawbridge, Stanley Palmer, Louise Henderson and Barry Brickell.



Patrick Hanly, *Innocent Land*, 1981, etching 12/25



Barry Brickell, ceramic bowl



Keith Patterson, *Woman at Window*, watercolour



Donogh Hurley, *Woman by (Lake) Nyanza*, oil on board

## Perfect Match

6 September – 19 October 2014

An exciting development has come about through the temporary closure of the Anderson Park Art Gallery in Invercargill. As a result, staff from both galleries will develop a joint exhibition of work from their respective permanent collections. Featuring paintings and graphic works, this presentation will be the first opportunity for many key works in the collections to be shown side by side. The exhibition will also bring to light some of the treasures hidden away in the storerooms until now.

# EVENTS

## East Gore Art Centre Fundraiser



September 2014

Date and Venue yet to be confirmed

Planning has started on our next fundraising auction for the East Gore Art Centre. More than a dozen works of art will again be up for auction, by some of the big names in New Zealand art including Kathryn Madill, John Reynolds, Dick Frizzell, Peter Cleverley and Bing Dawe, to name but a few. *Watch this space!*

Otis Frizzell, *Untitled*, lithograph 42/50

## John Perry Floor Talk

Confessions Of An Artoholic

Eastern Southland Gallery

Date yet to be confirmed

John Perry is one of New Zealand's most well-known social history, folk art and natural history enthusiasts, and an avid collector of all things New Zealand. John will talk about his life-long passion for collecting and how it has enriched his life and the lives of others.

Admission to exhibitions is free.

Gallery Hours: Monday to Friday 10am – 4.30pm, Wknds and Public Hols 1-4pm.

Closed Good Friday, Christmas Day, Boxing Day, and New Years Day.

Corner Hokonui Drive and Norfolk Street, Gore

Phone: 03 208 9907 Email: [jgeddes@goredc.govt.nz](mailto:jgeddes@goredc.govt.nz)

[www.esgallery.co.nz](http://www.esgallery.co.nz)

**esg** EASTERN  
SOUTHLAND  
GALLERY